

# HYBUILD COMPANY PROFILE

# MISSION & VISION



---

WITH A DEEP COMMITMENT TO EXCELLENCE AND SUSTAINABILITY, **WE AIM TO BE A LEADING SUPPLIER OF CONSTRUCTION CHEMICALS, EMPOWERING BUILDERS TO SHAPE A STRONGER FUTURE.**

At **HYBuild**, we specialize in developing high-quality construction chemicals that drive innovation and strength in the building industry. Founded by a dedicated team of chemists, geologists, and economists, we've combined our expertise to create admixtures that enhance every stage of construction. Whether it's accelerating setting times, reducing water usage, or improving the durability of structures, our products are designed to meet the unique demands of modern construction.

All of our solutions are developed and rigorously tested in our state-of-the-art labs, ensuring that we deliver the highest standard to our customers. We currently supply to developers all across Egypt, with a strong presence in landmark projects such as the New Administrative Capital and Al Almein City.

**Our vision** is to continuously innovate, creating new chemical solutions that simplify construction and ensure long-lasting quality. Looking ahead, we are expanding our reach beyond Egypt's borders, with the goal of serving a broader global market.

## **Our Comprehensive Portfolio**

- Concrete admixtures
- Curing & Sealing Compounds
- Concrete repair and protection solutions
- Performance grouts
- Waterproofing solutions
- protective coating
- Bonding Agent
- Flooring



# OUR PRODUCTS RANGE

Our company offers a wide range of chemical construction products designed to enhance the quality, durability, and performance of construction projects. These products are formulated with advanced technologies to meet the needs of modern construction

## Concrete Admixtures



Enhance concrete performance with additives that control setting times, improve workability, and increase strength for diverse construction needs.

## Curing & Sealing Compounds



Protect concrete by retaining moisture for proper curing, reducing cracking, and sealing surfaces against water, chemicals, and abrasion.

## Concrete Repair Systems



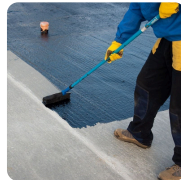
Restore damaged concrete with high-performance solutions that ensure structural integrity, shrinkage control, and long-lasting durability.

## Grouting Systems



Fill voids and anchor structures with precision using non-shrink, high-strength grouts for stable and secure applications.

## Waterproofing Solutions



Create impermeable barriers to protect structures from water ingress, ensuring long-lasting moisture resistance for basements, roofs, and more.

## Protective Coatings



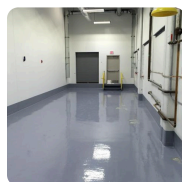
Guard against weather, chemicals, and abrasion with coatings that extend the life of concrete and steel while reducing maintenance.

## Bonding Agents



Ensure strong adhesion between new and old concrete, preventing delamination and enhancing the durability of repairs and overlays.

## Flooring Systems



Durable and resistant flooring solutions for industrial and commercial environments, offering chemical and wear resistance with aesthetic appeal.

**AND MANY MORE ON THE WAY....**

CHECK OUR WEBSITE TO STAY UP TO DATE

[hybuildcc-eg.com](http://hybuildcc-eg.com)



# CONCRETE ADMIXTURES

Chemical construction admixtures are specialized materials added to concrete before or during mixing to enhance its properties, improve performance, and meet specific construction requirements. These additives modify the behavior of concrete, offering benefits like accelerated or delayed setting times, improved workability, and enhanced durability, making them crucial in modern construction projects.

**HYBuild** produces various types of admixtures that fall under the following categories:

- Air entrainers
- Water reducers
- Set retarders
- Set accelerators
- Superplasticizers
- Specialty admixtures: which include corrosion inhibitors, shrinkage control, alkali-silica reactivity inhibitors, and coloring.

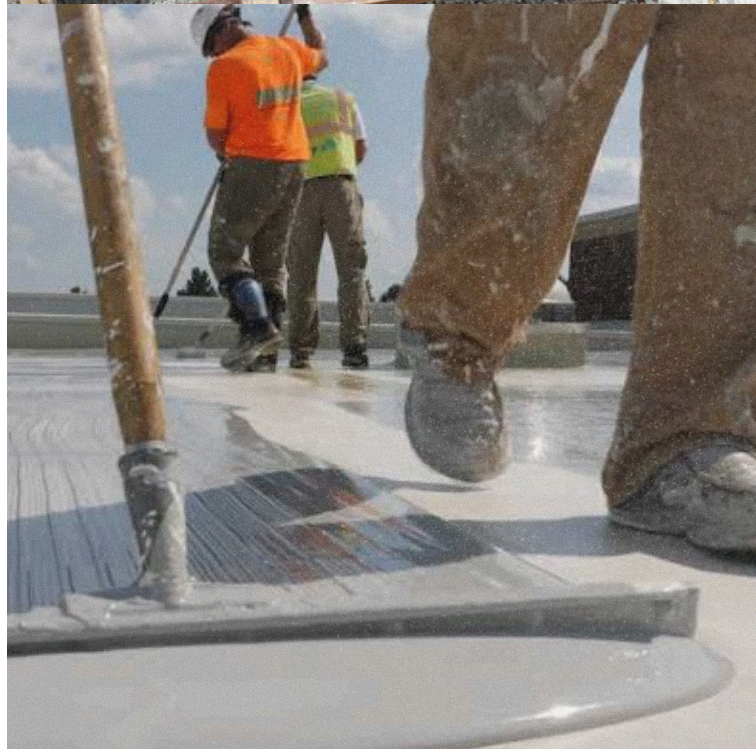
## ASTM Categories – Concrete Admixtures

ASTM C494 specifies the requirements for several chemical admixture types

- Type G: Water-reducing, high range, and retarding admixtures
- Type F: Water-reducing, high range admixtures
- Type A: Water-reducing admixtures
- WP : Water proofing admixture

## Introducing PC

Hybuild's cutting-edge generation of polycarboxylate admixtures is designed for superior concrete performance. PC enhances workability and strength by reducing water content while maintaining flowability, making it ideal for complex construction projects. Its eco-friendly formula aligns with market demands for sustainability and innovation. At Hybuild, we lead with advanced solutions to meet the evolving needs of modern construction.





# Concrete admixtures

Product Code: HYMIX G-5090

## ➔ Description

**HYMIX g-5090** is a chloride free, brown liquid, high range water reducing and superplasticizer concrete admixture. Workability retention admixture based on selected organic polymers which instantly disperse in water, it disperses the fine particles in the concrete mix enabling the water content of the concrete to perform more effectively.

## ➔ Advantages

- Gives increased working life to fresh concrete.
- Increases workability without extra water, reducing placing time and costs.
- Improves cohesion, minimizing segregation and improving surface finish.
- Aids pumping by improving cohesion and reducing workability loss.
- Allows a reduction in water/cement ratio, enhancing durability by producing low permeability concrete with reduced shrinkage cracking potential.
- Chloride free, safe for use in pre-stressed and reinforced concrete.
- Can be used with concrete containing micro silica and other cement replacements.

## ➔ Uses

**HYMIX G-5090** is recommended for all cement types in the following areas:

- Ready to use concrete
- Heavily reinforced concrete works
- Slabs and foundations
- Paving and industrial floors
- Fluid concrete for long maintenance of slump

## ➔ Technical Prop.

- **Appearance:** Dark Brown Liquid
- **PH:** 5.0 – 8.0
- **Specific gravity:** 1.21 +/- 0.02 Kg/Lit. @ 25 C
- **Chloride content:** Nil

## ➔ Compatibility

**Compatibility with Cement:** HYMIX G-5090 is compatible with all types of Portland cements and sulphate resistance cements type (V).

**Compatibility with other Admixtures:**

It can be used with other HYBuild admixtures in the same concrete mix.



SCAN TO VIEW  
FULL DATASHEET



# Curing & Sealing Compounds

Product Code: HYSEAL C-3010

## ➔ Description

**HYSEAL C-3010** is a water-based, non-toxic, clear curing and sealing compound designed to retain moisture in freshly placed concrete. It forms a continuous film, reducing water evaporation and promoting efficient curing, ensuring strength development and minimizing surface cracking. It also doubles as a surface sealer to protect against staining and abrasion.

## ➔ Uses and Advantages

**HYSEAL C-3010** is ideal for: Freshly cast concrete surfaces, Slabs, pavements, and bridge decks, Industrial and commercial concrete floors, and Exposed architectural concrete.

Its **advantages** include:

- Enhances hydration, improving concrete strength and durability.
- Reduces surface cracking by preventing rapid moisture loss.
- Provides long-lasting surface protection against dusting, staining, and abrasion.
- Easy application with low VOC content, safe for indoor and outdoor use.
- Transparent, non-yellowing film for an aesthetically pleasing finish.

# Concrete Repair

Product Code: HYREP R-4050

## ➔ Description

**HYREP R-4050** is a polymer-modified, fiber-reinforced repair mortar designed for the patching and repair of spalled or damaged concrete. Its advanced bonding properties ensure compatibility with both old and new concrete, providing exceptional durability and protection against further deterioration.

## ➔ Uses and Advantages

**HYREP R-4050** is recommended for: Structural repairs in reinforced concrete structures, Repairs of cracks, spalls, and surface defects, Protection against freeze-thaw damage and chemical attack, Repairs in bridges, parking structures, and industrial floors

Its **advantages** include:

- High bond strength to existing concrete substrates without the need for a bonding agent.
- Fiber-reinforced for superior crack resistance and enhanced durability.
- Rapid setting with minimal shrinkage, ideal for time-sensitive repairs.
- Excellent resistance to freeze-thaw cycles and chloride penetration.
- Non-corrosive and safe for use in reinforced concrete.





# Performance Grouts

Product Code: HYFLOW G-6020

## ➔ Description

**HYFLOW G-6020** is a high-performance, non-shrink, cementitious grout with excellent flowability, developed for precision grouting applications. It offers superior load-bearing capacity, making it ideal for structural repairs and installations requiring stable and durable grout solutions.

## ➔ Uses and Advantages

**HYFLOW G-6020** is perfect for: Grouting under base plates and machinery, Filling voids and cavities in concrete structures, Precision grouting in structural applications, and Anchor bolt grouting and crane rail installations.

Its **Advantages** include:

- Non-shrink properties ensure complete fill and contact, preventing voids.
- High flowability for easy application, even in restricted areas.
- Superior compressive strength ensures load-bearing capacity.
- Low permeability for enhanced durability and protection from aggressive environments.
- Suitable for both interior and exterior applications.

# Water Proofing Solutions

Product Code: HYSEAL W-7010

## ➔ Description

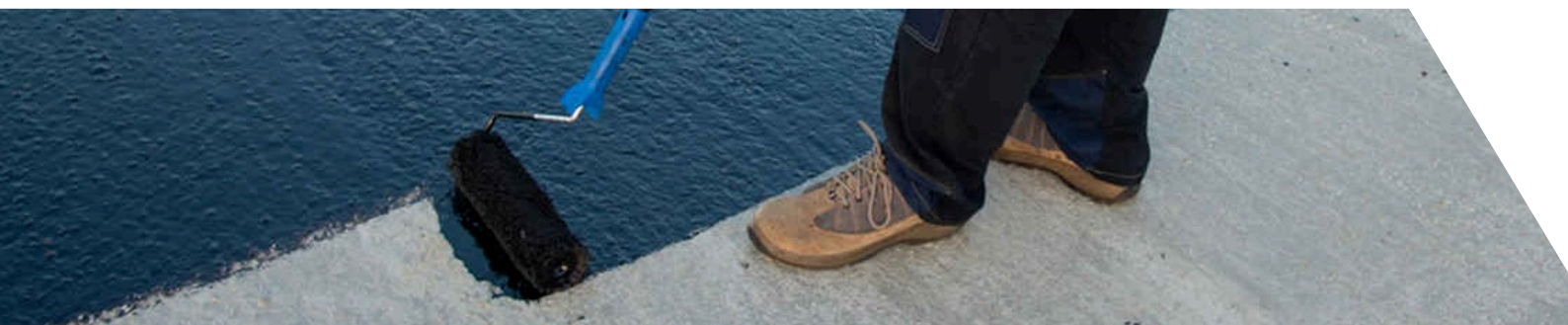
**HYSEAL W-7010** is a flexible, liquid-applied, elastomeric waterproofing membrane designed for concrete and masonry surfaces. Its advanced formula creates a seamless, durable barrier against water ingress, suitable for a wide range of waterproofing applications.

## ➔ Uses and Advantages

**HYSEAL W-7010** is ideal for: Below-grade waterproofing for foundations and basements, Waterproofing of terraces, balconies, and flat roofs, Retaining walls, tunnels, and water tanks, Waterproofing wet areas in bathrooms and kitchens

Its **Advantages** include:

- Excellent adhesion to a variety of substrates, including concrete, masonry, and metal.
- Highly flexible and elastomeric, capable of bridging cracks and accommodating movement.
- Seamless application prevents leaks and water infiltration.
- Resistant to UV, chemicals, and weathering, ensuring long-term performance.
- Easy to apply with a brush, roller, or spray.



# Protective Coating

Product Code: HYCOAT P-8020

## ➔ Description

**HYCOAT P-8020** is a high-performance, two-component epoxy coating formulated for maximum protection of concrete and steel surfaces. It provides a durable, chemical-resistant barrier, ideal for industrial and commercial environments where heavy exposure to harsh chemicals and abrasion is expected.

## ➔ Uses and Advantages

**HYCOAT P-8020** is ideal for: Protection of concrete floors in industrial and chemical plants, Protective coatings for steel structures and tanks, Coating of parking garages and warehouses, and Areas subject to heavy traffic and chemical exposure.

Its **Advantages** include:

- Excellent chemical resistance to acids, alkalis, and solvents.
- High abrasion resistance, ensuring long-term surface protection.
- Glossy, non-porous finish, easy to clean and maintain.
- Quick curing, allowing for rapid return to service.
- Suitable for both interior and exterior applications.

# Bonding Agents

Product Code: HYBOND B-3030

## ➔ Description

**HYBOND B-3030** is a high-performance bonding agent designed to improve adhesion between old and new concrete. Its advanced formulation enhances bond strength, ensuring durability in concrete overlays, repairs, and surface treatments.

## ➔ Uses and Advantages

**HYBOND B-3030** is suitable for: Bonding fresh concrete to hardened concrete, Overlay applications in floors and pavements, Use as a bonding primer for patch repairs and Enhancing adhesion in cementitious renders and screeds.

Its **Advantages** include:

- Exceptional bond strength, preventing delamination of overlays.
- Can be applied in both dry and damp conditions.
- Improves workability and performance of repair materials.
- Reduces shrinkage, enhancing long-term durability.
- Easy to apply with a brush or roller.





# Flooring

Product Code: HYFLOOR F-9050

## ➔ Description

**HYFLOOR F-9050** is a self-leveling, cementitious floor compound designed for smooth and durable surfaces in both commercial and industrial settings. Its advanced formula provides a seamless, hard-wearing finish, perfect for areas with heavy foot traffic or machinery.

## ➔ Advantages

- Excellent flow properties for smooth, seamless finishes.
- High compressive strength and durability, ideal for heavy loads.
- Fast setting, allowing for quick return to service.
- Resistant to cracking and surface wear.
- Easy to apply with minimal effort, reducing labor time and costs.

## ➔ Uses

**HYFLOOR F-9050** is suitable for:

- Industrial and commercial flooring
- Warehouse and showroom floors
- Residential flooring prior to installing tiles, wood, or carpet
- Underlayment for epoxy coatings

## ➔ Technical Prop.

- **Appearance:** Grey powder
- **Compressive Strength:** >35 MPa @ 28 days
- **Flowability:** 200–230 mm (Flow Ring Test)
- **Setting Time:** Initial: 2–3 hours, Final: 5–6 hours
- **Thickness:** 5–30 mm per application
- **Coverage:** 1.6 kg/m<sup>2</sup> @ 1 mm thickness
- **Chloride Content:** Nil

## ➔ Compatibility

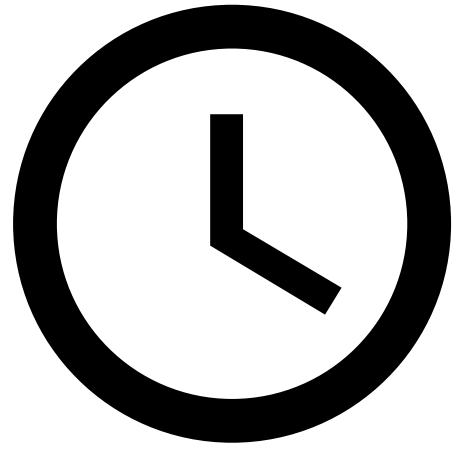
- Can be used with Hybuild's epoxy or polyurethane floor coatings for enhanced performance.
- Suitable for use over concrete, screeds, and other substrates.



SCAN TO VIEW  
FULL DATASHEET



# SERVING CUSTOMERS WITH EXCELLENCE



---

1,2

## UNDERSTANDING THE CUSTOMER NEEDS

We recognize each project's unique challenges and customize our solutions to meet the specific requirements of developers, ensuring our products align with high industry standards.

## QUALITY IN EVERY DETAIL

We prioritize top-tier quality throughout the service process. Our rigorously tested products, including admixtures, guarantee durability, safety, and sustainability in all construction projects.

---

3,4

## RELIABILITY AND TIMELINESS

Meeting deadlines is critical. We ensure prompt material delivery and provide continuous support to avoid costly project delays while maintaining quality.

## INNOVATION AND ADAPTABILITY

We embrace innovation by continuously developing advanced and eco-friendly solutions, staying ahead of industry trends to offer the best products to our customers.

---

5,6

## BUILDING LONG-TERM RELATIONSHIPS

We focus on building lasting partnerships, providing personalized service, and aligning with clients' long-term objectives to help them succeed.

## SUSTAINABILITY AND RESPONSIBILITY

Committed to sustainability, we ensure our products meet environmental standards, reducing waste and promoting greener infrastructure in key projects.



# OUR BUSINESS PARTNERS



ROWA GROUP



REACH OUT TO US TO **BECOME**  
**OUR NEXT PARTNER...**



---

## CONTACT US

6th of October, Giza  
+20 11 00260183  
+20 11 00260386  
+20 11 00260387

**Email:**  
[info@hybuildcc-eg.com](mailto:info@hybuildcc-eg.com)  
**Telephone:**  
023 8342795



Visit Our  
Website